

Year 2 Early Care & Education Report Summary

Arizona SPAN implemented and evaluated four early care and education (ECE) projects during the second year of its five-year program (September 30, 2024 - September 29, 2025):



CLICK ICON
FOR RESULTS!

YUMA COUNTY FARM TO ECE LEARNING COLLABORATIVE. This year, Arizona SPAN partnered with the Yuma County Public Health Services District (YCPHSD) to develop, implement, and evaluate a Farm to ECE Learning Collaborative that ran from January–May 2025. The YCPHSD recruited 12 historically underserved family child care home providers (FCCHs) across the county and used the [Go NAPSACC](#) Farm to ECE improvement process to guide these providers through policy, systems, and environmental (PSE) changes related to gardening and local foods.



CLICK ICON
FOR RESULTS!

STATEWIDE PHYSICAL ACTIVITY (PA) LEARNING COLLABORATIVE. In 2025, Arizona SPAN successfully implemented a new, statewide Go NAPSACC PA Learning Collaborative for all provider types. Six trained Go NAPSACC Consultants were recruited—two as formal Learning Collaborative trainers and four as technical assistance providers. The PA Learning Collaborative was then launched on 6/19/25, running through 8/28/25. During the sessions, eight provider participants from four central and southern Arizona counties were guided through Go NAPSACC’s PSE improvement process for Infant & Child PA.



CLICK ICON
FOR RESULTS!

ARIZONA DEPARTMENT OF HEALTH SERVICES (ADHS) & FIRST THINGS FIRST PARTNERSHIP. In response to ECE Landscape Analysis findings, Arizona SPAN partnered with First Things First Child Care Health Consultants (CCHCs) and AZ Health Zone Local Implementing Agency staff to expand the state network of trained Go NAPSACC and [Empower](#) Consultants. The partnership strengthens ADHS-First Things First collaboration to achieve the shared goal of reaching underserved, primarily rural ECE providers with robust technical assistance for PSE changemaking. It launched in November 2025 and is showing early signs of success.



CLICK ICON
FOR RESULTS!

STATE-LEVEL EMPOWER PROJECT. Following two years of noteworthy changes to Arizona’s Empower program, Arizona SPAN initiated a plan to reach all Empower-participating providers with new and revised resources. As of August 2025, three online, asynchronous Empower courses were updated to align with Arizona’s revised Empower standards, and new materials toolkits were mailed to the over 2,000 ECE providers that participate in Empower. The toolkits included important information about the revised standards to help providers implement them and share information with families.

Yuma County Farm to ECE Learning Collaborative

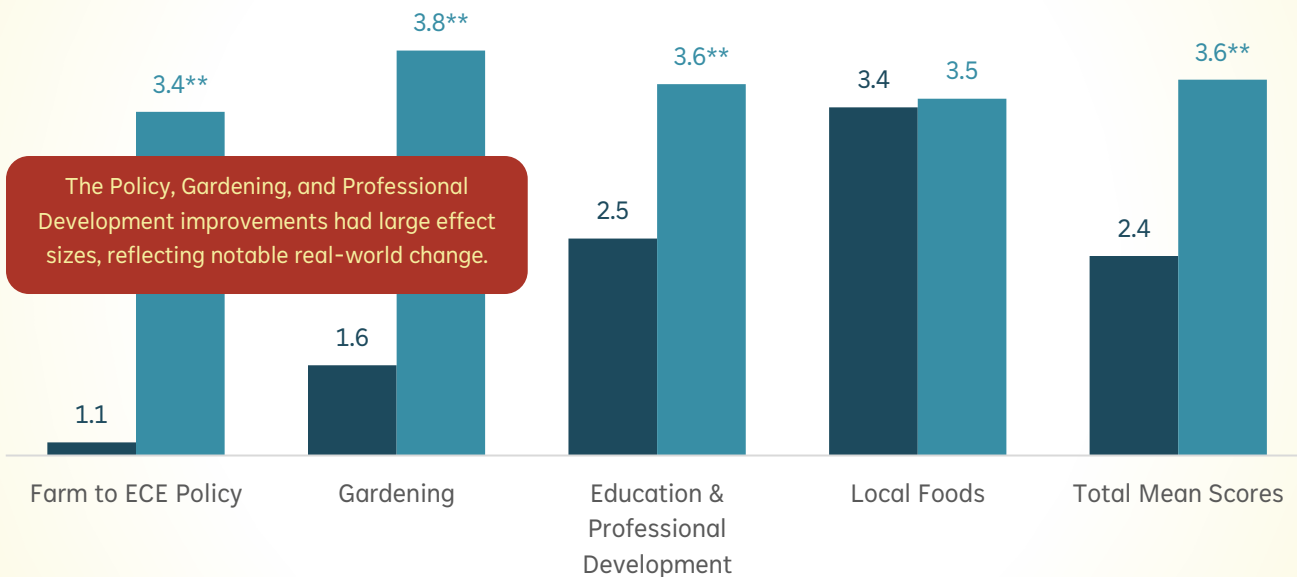
12
 FAMILY CHILD CARE HOMES
 serving 112 children
 enrolled in the Learning
 Collaborative and
 completed a Farm to ECE
 pre-assessment

11 (92%)
 OF ENROLLED PROVIDERS
 serving 102 children
 completed the Go
 NAPSACC improvement
 process, including a post-
 assessment

153 HOURS
 OF SUPPORT & TRAINING
 for Farm to ECE changes
 was provided by Go-
 NAPSACC-certified
 YCPHSD staff during the
 learning collaborative

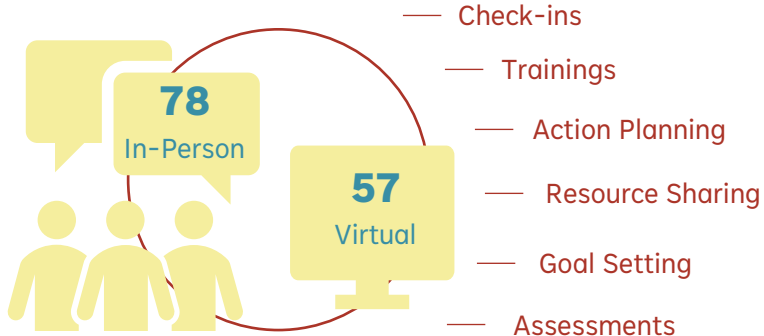
ALL (100%)
 PROVIDERS COMPLETING POSTS
 improved their total scores
 and their % of best practices
 met, reflecting real-world
 PSE changes made
 between 1/1-5/23/25

Family and child care homes participating in the Yuma Learning Collaborative (n=11) increased their total mean GoNAPSACC scores from PRE to POST. Scores ranged from 1 (weakest) to 4 (best) practice.

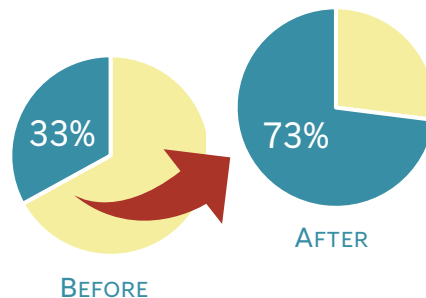


**Highly statistically significant at $p \leq 0.01$

YCPHSD Contacts with Providers Included



% of Best Practices Met



Statewide Physical Activity (PA) Learning Collaborative

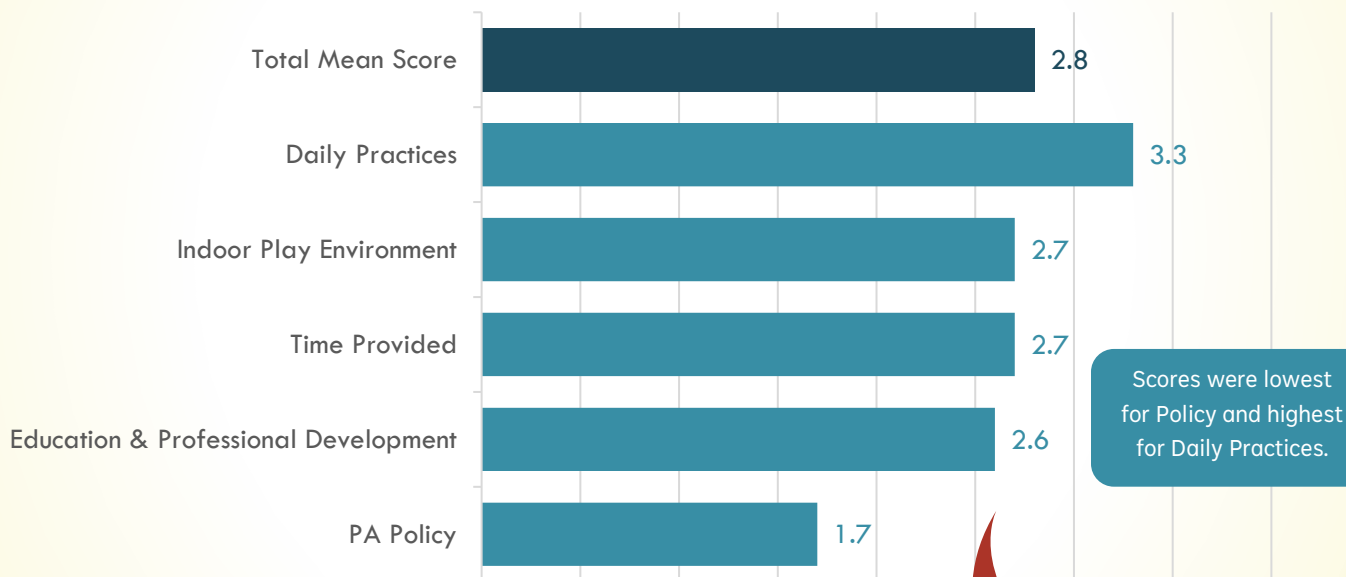
8
ECE PROVIDERS
serving 305 children
enrolled in the Learning Collaborative (4 centers, 3 family child care homes, 1 Head Start)

4
OF ARIZONA'S 15 COUNTIES
Maricopa, Pima, Pinal, Yuma
were represented in this Learning Collaborative (two more urban, two more rural)

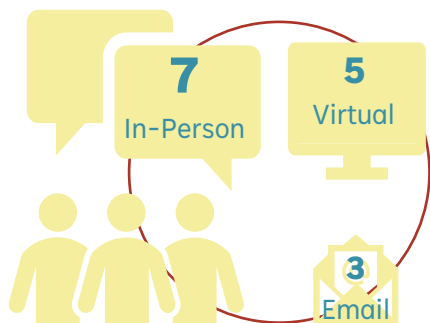
6 (75%)
OF ENROLLED PROVIDERS
serving 291 children
completed the Go NAPSACC Infant & Child PA pre-assessment as of August 5, 2025

13 HOURS
OF TECHNICAL ASSISTANCE
by trained Consultants
was given to individual participating providers to support PSE change as of August 5, 2025

Prior to making Go NAPSACC changes, ECE providers' mean scores for their baseline Infant & Child Physical Activity assessment varied by section (n=8). Scores ranged from 1 (weakest) to 4 (best) practice.

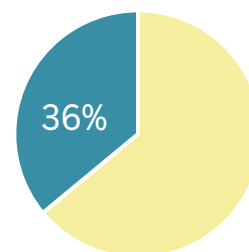


Consultant's Customized Support to ECE Providers Included



- Help with assessments
- General progress check-ins
- PSE action planning assistance
- Help identifying resources
- Goal setting support

The % of best practices met at "pre" showed room for growth.



NOVEMBER 2024

AN INTERSTATE AGENCY AGREEMENT WAS COMPLETED

between the ADHS & First Things First to explore the impact intentionally funded state-level partnerships can have on local Empower & Go NAPSACC implementation.

THE GOAL

Leverage the existing cohort of First Things First Child Care Health Consultants (CCHCs) to expand statewide reach to underserved ECE providers in rural areas (i.e., providers who do not participate in Arizona's Quality First Program). CCHC support is intended to strengthen ECE providers' nutrition and physical activity policies and practices using Go NAPSACC and Empower. This project also bolsters the relationship between the ADHS and First Things First, streamlining state-level activities and statewide support networks.



JAN-MAR 2025

CCHC CONSULTANTS SERVING 9 COUNTIES OPTED IN

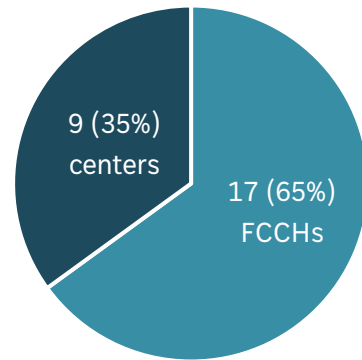
CCHCs began to recruit underserved ECE providers in Gila, La Paz, Maricopa, Mohave, Pima, Pinal, Santa Cruz, Yavapai, and Yuma.

APR-JUL 2025

26 ECE PROVIDERS

IN 8 COUNTIES ENROLLED, INDICATING THAT THEY WOULD LIKE TO RECEIVE CCHC SUPPORT FOR EMPOWER, GO NAPSACC, OR BOTH.

Most (18, or 69%) were in Santa Cruz County, where CCHCs began recruiting and supporting ECE providers earlier than in the other counties. By provider type, most were FCCHs:



During Year 2, 17 of the 26 (65%) enrolled ECE providers were active in at least one state-supported program.

7 ECEs



Go NAPSACC only

5 ECEs



Empower only

5 ECEs



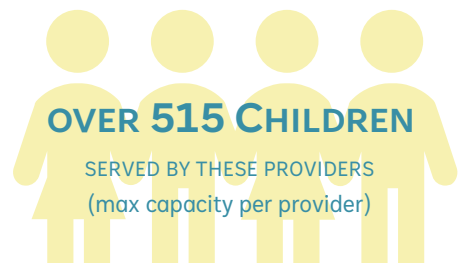
Empower & Go NAPSACC

Go NAPSACC's *Child Nutrition* and *Infant & Child Physical Activity* were the most popular topics, followed by Empower's *Family-Style Meals*, *Fruit Juice*, and *Physical Activity/Screen Time* topics.



OVER 515 CHILDREN

SERVED BY THESE PROVIDERS (max capacity per provider)



State-Level Empower Project

RESPONDING TO CHANGES

Over the past two years, the Arizona Empower program experienced three impactful changes: (1) revision of the 10 Empower Standards in response to emerging provider needs and recent evidence around best practices, (2) the loss of licensure discount funding for participating ECE providers, and (3) state-level staffing changes. Together, these changes created the need—and opportunity—to reinvigorate Empower with updated trainings, resources, and provider contact to bolster providers' understanding of and eagerness to participate in the program.

EMPOWER TRAININGS

This year, Arizona SPAN reviewed the [online Empower training modules](#) and developed an action plan to revise them in accordance with the revised Empower standards. Revisions completed during Year 2 included three modules (Year 3 revisions will target additional standards):



EMPOWER TOOLKITS

Arizona SPAN also created and mailed new materials kits to the **2,037 ECE providers** registered in Empower. These toolkits used updated information that reflected the revised standards, including a welcome letter, an Empower Standards resource to post on parent and staff boards, and a one-page information sheet for each of the 10 Standards.

STATEWIDE REACH

The broad reach of these state-level efforts spans all ECE providers enrolled in the Empower program, as well as the children and families served by those providers.

According to the June 2025 Empower registration report:

